



DNA Matches

Hope Tillman & Walt Howe
Charlestown Genealogy Club
June 11, 2021

DNA Websites

23 and Me

Family Tree DNA

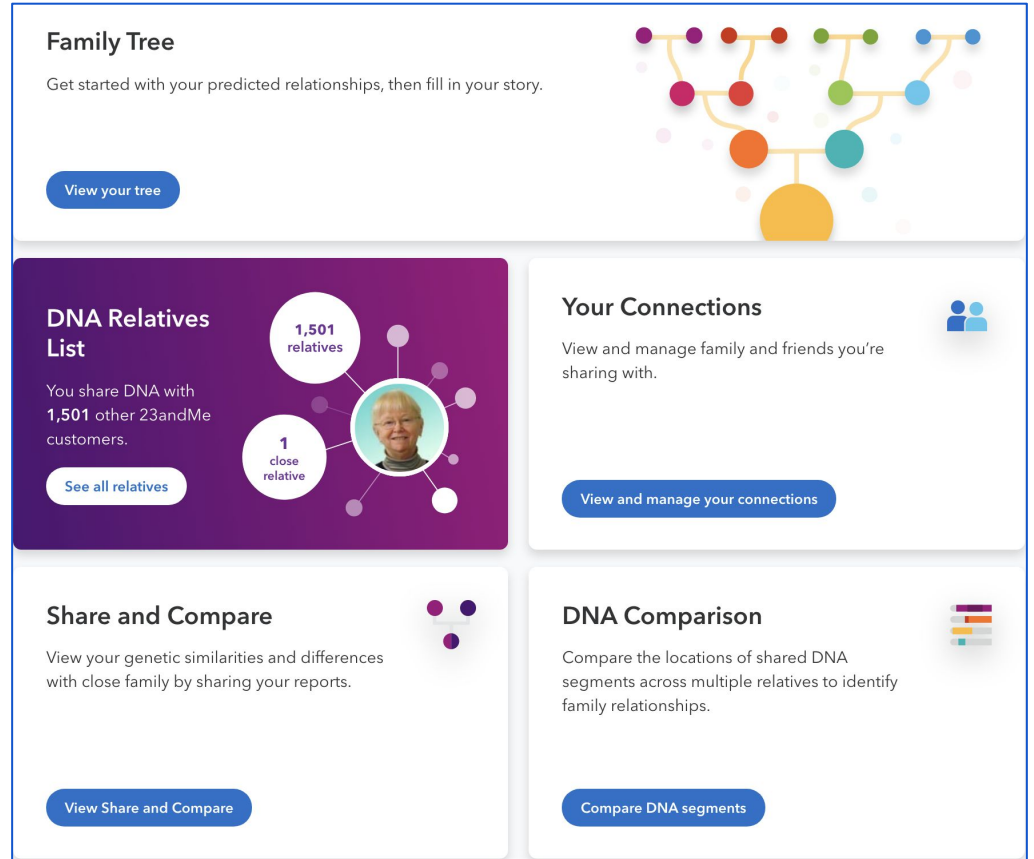
Ancestry

WikiTree

GEDmatch

23 and Me -

<https://you.23andme.com/tools/>



The screenshot displays the 'Tools' section of the 23andMe website, featuring four main interactive cards:

- Family Tree:** A card with a colorful tree diagram. Text: "Family Tree", "Get started with your predicted relationships, then fill in your story.", and a button "View your tree".
- DNA Relatives List:** A purple card with a central profile picture of a woman. Text: "DNA Relatives List", "You share DNA with 1,501 other 23andMe customers.", "1,501 relatives", and "1 close relative". Includes a button "See all relatives".
- Your Connections:** A white card with a blue icon of two people. Text: "Your Connections", "View and manage family and friends you're sharing with.", and a button "View and manage your connections".
- Share and Compare:** A white card with a purple icon of three people. Text: "Share and Compare", "View your genetic similarities and differences with close family by sharing your reports.", and a button "View Share and Compare".
- DNA Comparison:** A white card with a purple icon of a DNA segment. Text: "DNA Comparison", "Compare the locations of shared DNA segments across multiple relatives to identify family relationships.", and a button "Compare DNA segments".

FamilyTree DNA - familytreedna.com



Best for Y-DNA (male line) and Mitochondrial DNA (female line)

<https://learn.familytreedna.com/user-guide/y-dna-myftdna/y-matches-page/>

Ancestry



Add AncestryDNA® Traits

Explore more about what your DNA has to say about you. Learn, compare, and share personal traits your genes influence—from things you can see, like freckles, to ones you can't, like cilantro aversion.

[Learn more](#)

DNA Story ?

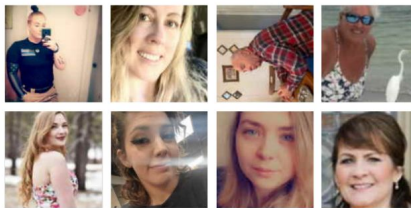
Ethnicity Estimate

- 58% England & Northwestern Europe
- 19% Scotland
- + 4 Other regions

Discover the places, history, and cultures that shaped who you are today—using just your DNA.

[Discover Your DNA Story](#)

DNA Matches ?

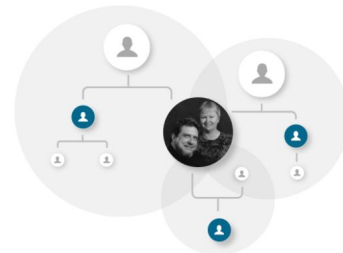


★ 101 Starred matches

👤 1000+ 4th cousins or closer

[View All DNA Matches](#)

ThruLines™ ?



ThruLines uses Ancestry trees to suggest how you may be related to your DNA matches through common ancestors.

[Explore ThruLines](#)

GEDmatch



[Home](#) [How It Works](#) [Applications](#) [About Us](#) [Support](#)

[JOIN FOR FREE](#)

[SIGN IN](#)

Comprehensive solutions for genetic genealogy and family tree research

GEDmatch provides more applications for comparing your DNA test results with the most people worldwide.

[VIEW OUR APPLICATIONS](#)

